

Complete Colossal Celestial SCCS Space Cover Business!

Bidder or seller of this item? [Log in](#) for your status.

Listing Ended Early

The Seller Ended this Listing Early Because: The item is no longer available for sale.

Click the Image Below for a Larger View



advertisement

BIN Price

\$100,000.00

Time Left

Closed (Sun Sep-26-10 19:52:07 EDT)

Private ID

350385794485

You Can Also

[Watch this item](#)

Shipping

Free! (to United States)
[Click for Full Shipping Details](#)

Will Ship To

Internationally (Worldwide)

Shipping & Handling

\$0.00 (to United States)
\$26.00 (to Canada)
\$44.00 (to Worldwide)

Insurance

Not Offered

Type Of Service

Other

Shipping & Payment Notes

We normally ship within 2 business days.

Starting Time

Aug-18-10 10:17:05 EDT

Payments Accepted



or Check, Money Order

[Convert
Currency](#)

Seller

gerard

Member Since: Mar '08

[Ask Seller a Question](#)

[Add to My Favorite Sellers](#)

[View this Seller's Other Items](#)

Location

NY

United States



[Safe Buying Tips](#)



Buy Confidently
Buyer Protection
[Learn More](#)

[Report/Move](#)

Description

Gerard's Stamps - Family Stamp Business Since 1926 We Buy Stamps! We Buy Estates! We Buy Collections!



Complete Colossal Celestial SCCS Space Cover Business!

Gerards Stamps Since 1926

Description: This is the complete business for Space City Cover Society. We were fortunate to buy it intact. It came from the cover business Harry Anderson of Houston, Texas had. Are you ready for this? There are approximately 500,000 covers in all! Most of them appear to be the cacheted SCCS covers with some first day issues as well. These covers are selling right now for \$2, \$3, and more depending on the issue. But that is just the start of it. It includes the complete "NLP", Nasa Local Post stamps in the original sheet form and well as cut down into sheets of 9 or 10. These sheets sell for about \$10 each and there are thousands of them. It also includes a ton of original Nasa color and black and white photos. It also includes the press kits for many, many of the launches and they go for up to \$100 or more each depending on the launch. It also includes many of the original printing plates for the cachets! Based on what is in here you should easily make 5 to 10 times your money back over the starting price! As you can see, this is in my family room and it is taking up to much of it. I have no time to break it down. THIS IS A PICKUP ONLY UNLESS YOU MAKE ALL THE ARRANGEMENTS FOR SHIPPING. It will take a 14 foot truck to hold it all. There are about 120 boxes in all and about 80 of them are about 2 feet by 2 feet by 2 feet. I live in Rochester, NY. NO INTERNATIONAL BIDS CAN BE ACCEPTED, as it would have to be palletized and shipped by boat. Any questions, please feel free to email me at gerarde@rochester.rr.com. REMEMBER, this is the intact business he had!

I took pictures after finally opening some of the boxes for the first time. I am utterly amazed! He has the normal space covers that you see sold everywhere but, he also has covers that are very unique. An example, which some are shown below, are covers for the Tile Testing that was done on a F-104 jet. There is a cover for each of the days that testing was done with the correct date cancellation. It seems that if there was an event happening, he had a cover for it. Potentially, there could be hundreds of different covers to complete a full set. Altogether there are probably 1500 to 2000 different covers! There are normal First Day Covers as well, which I showed a couple. I only opened up three boxes at random for these first pictures that you see for covers. I did look in another box and even saw space covers from Germany. You will also see the original printer plates he used for some of the covers. Samplings of the NASA Local Post stamps are shown and there are several banker type boxes filled with them. Also, a sample of one set of the mission photos from one of the many, many I found. Did not get a chance to take photos of the original press kits. These are not reprinted. These are the actual press kits that were handed out. These alone command a good price right here on Ebay. Again please email me at gerarde@rochester.rr.com if you have any questions.

Below are the 2 x 2 x 2 boxes and there is another row behind them!

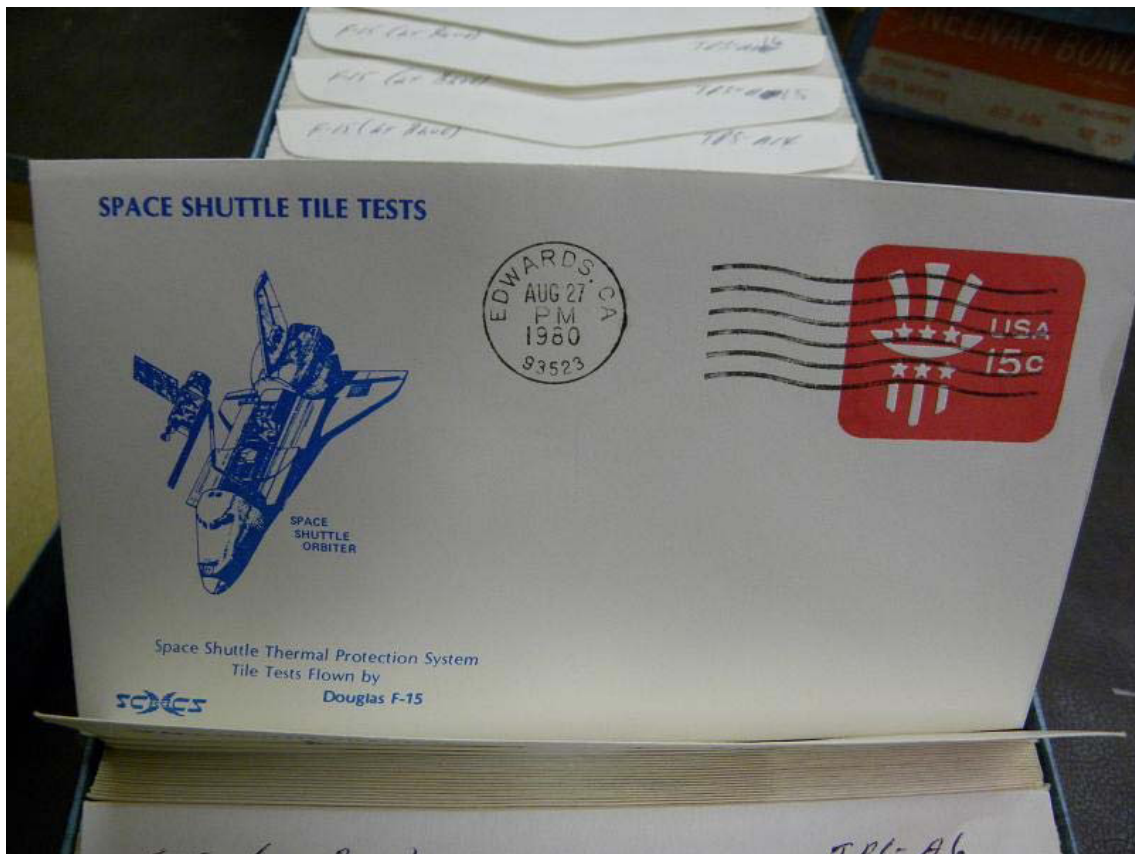


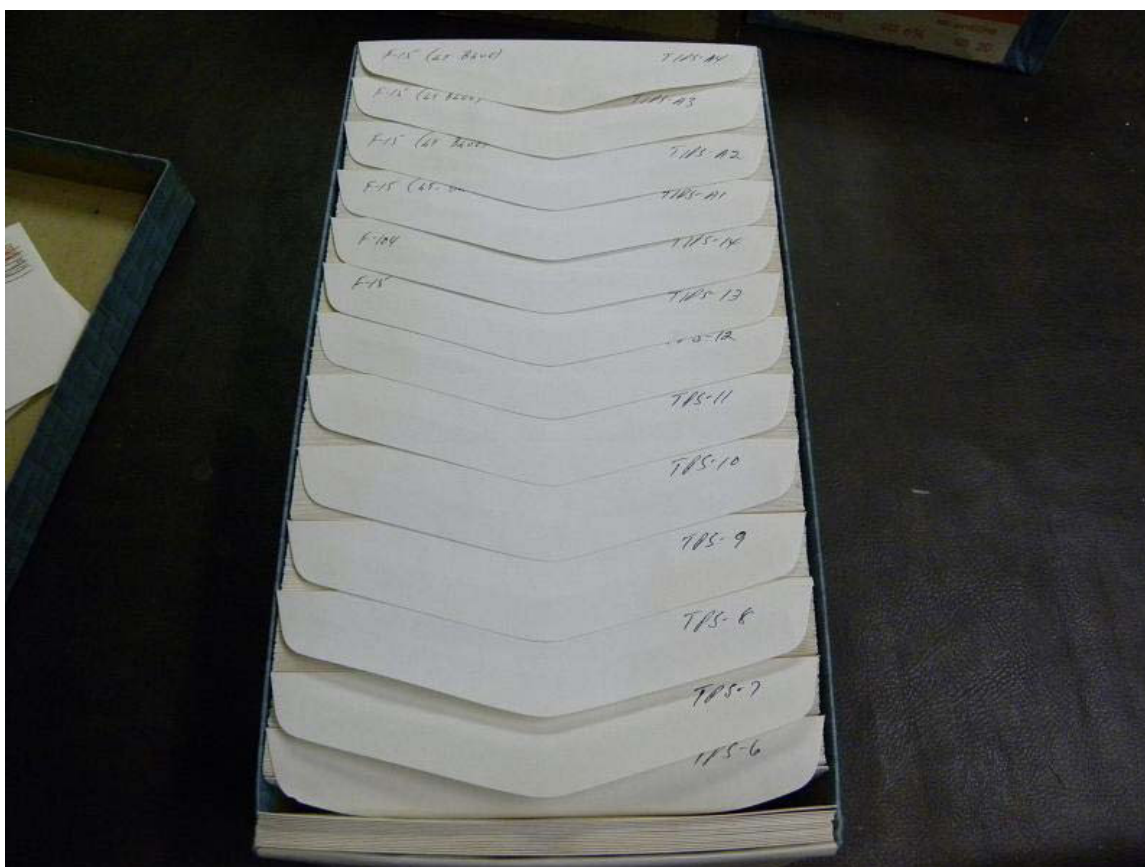
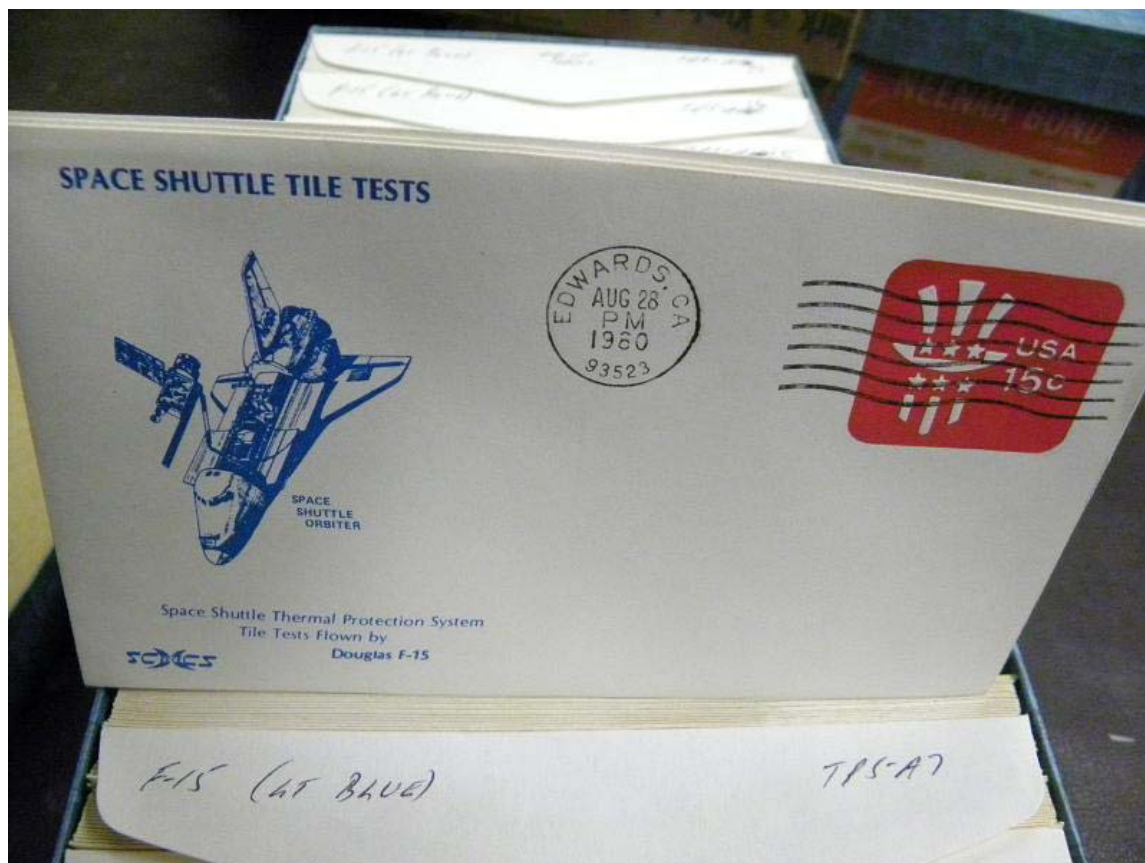
Below are a few of the boxes containing covers.

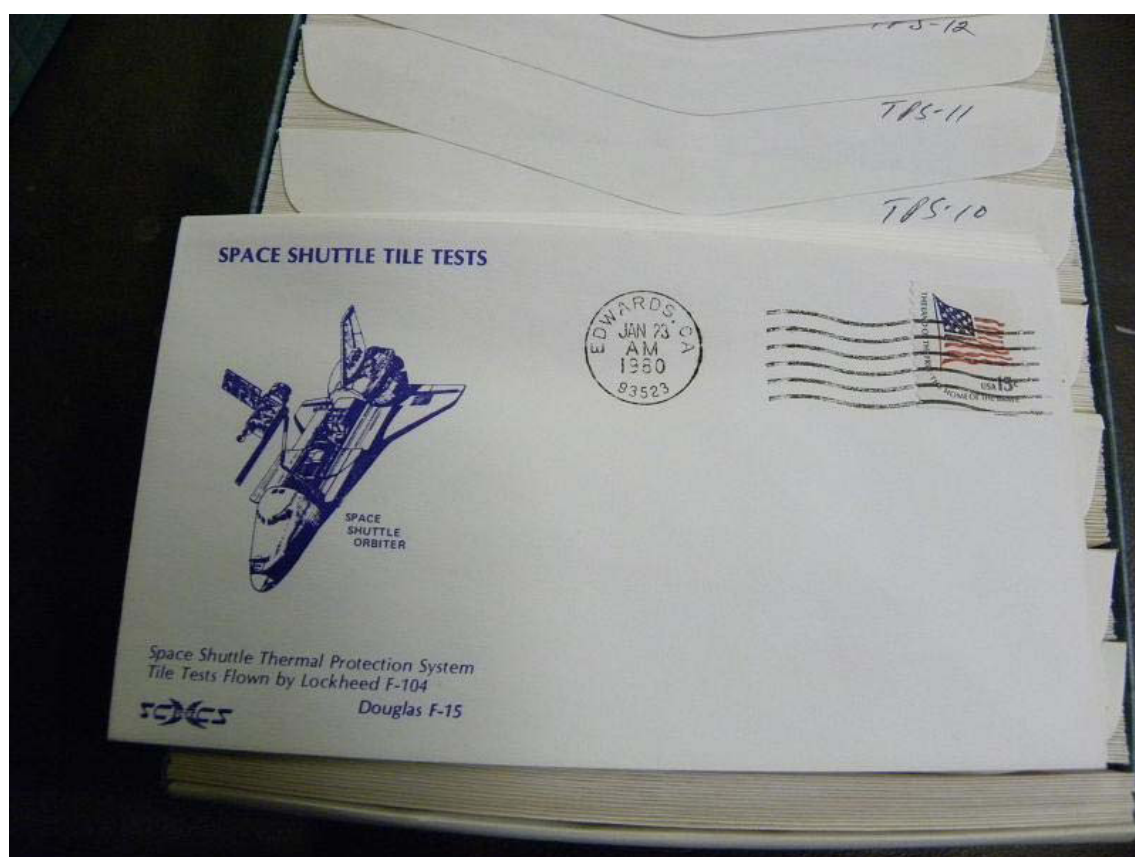
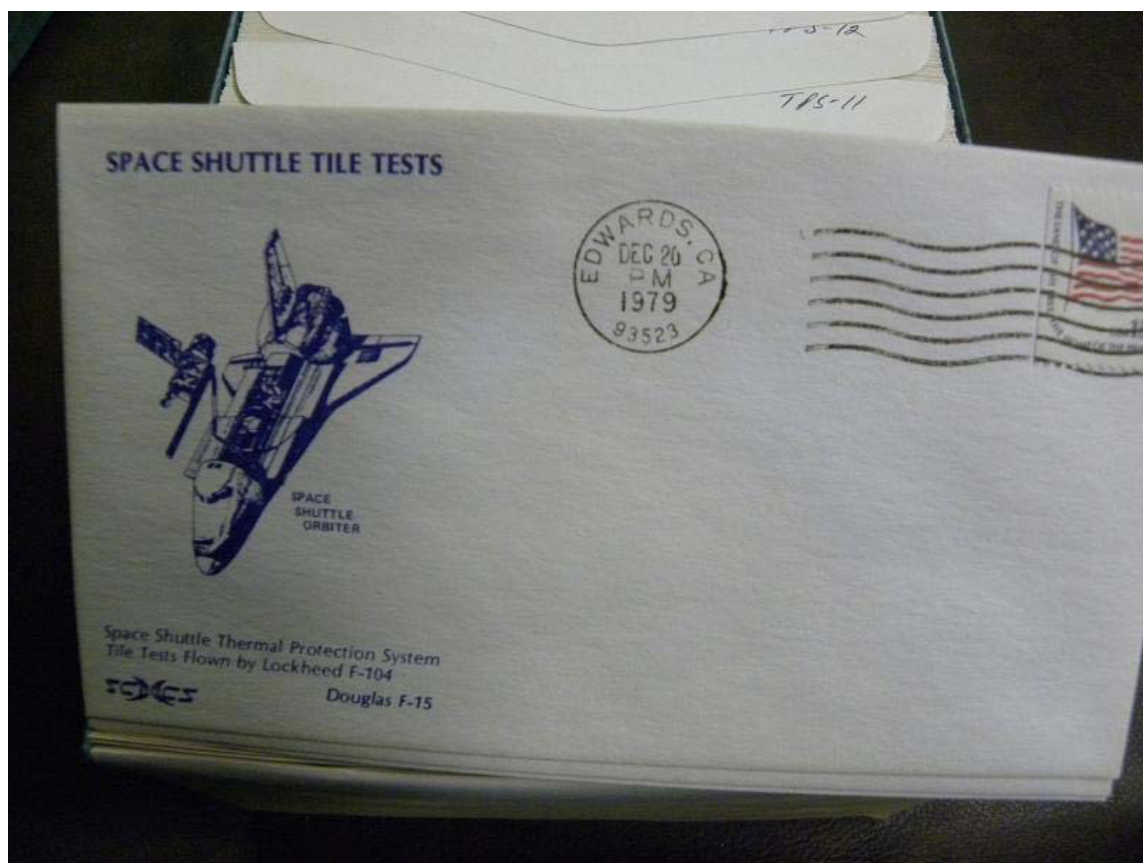




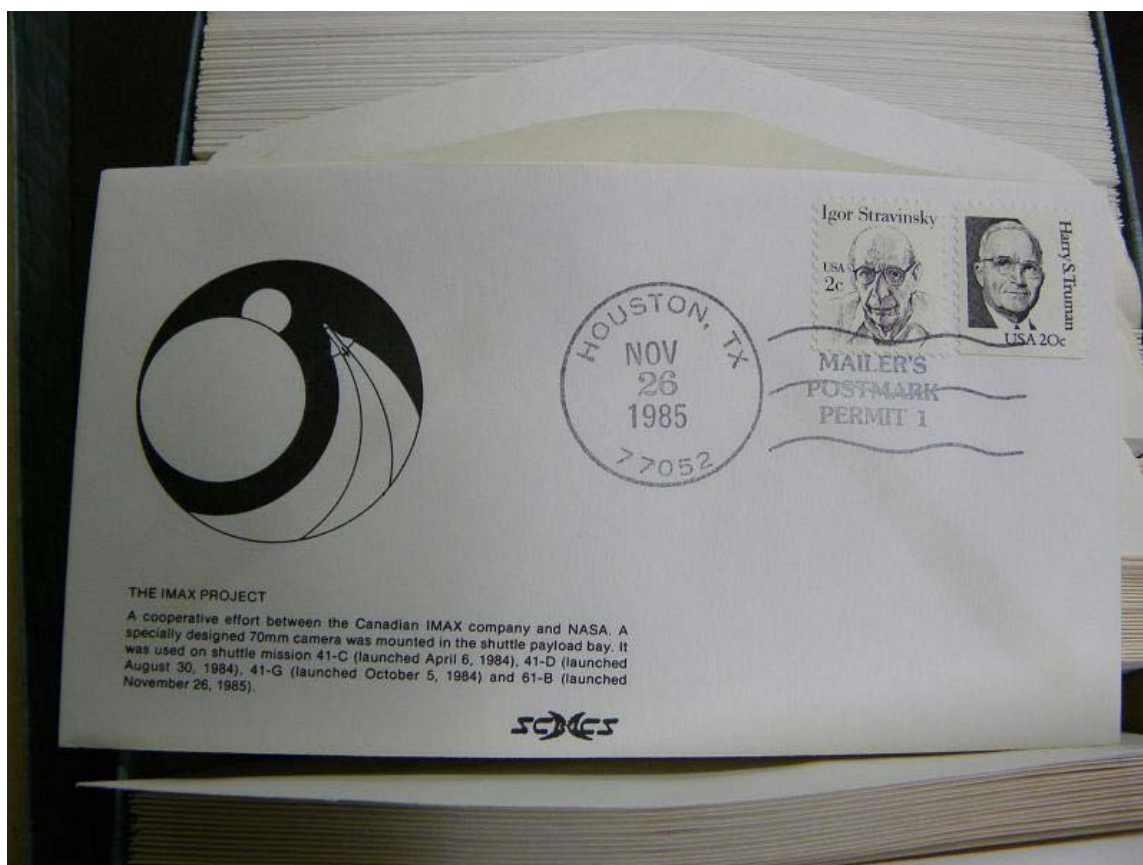












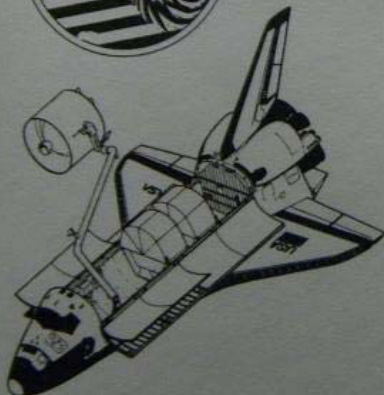






51-C POST-FLIGHT PRESS CONFERENCE

This was held at the Johnson Space Center on January 23, 1986. Even with seven delays before launch, the crew announced that they were proud of the successful mission.

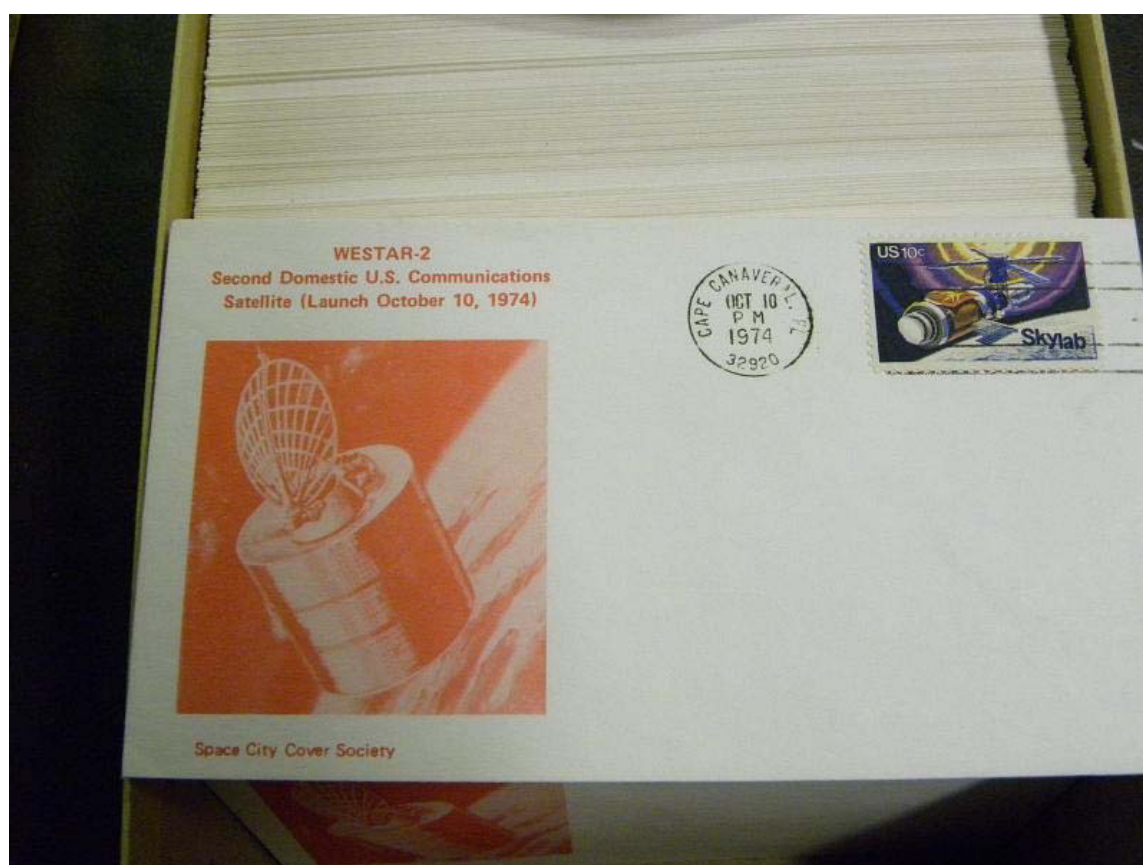
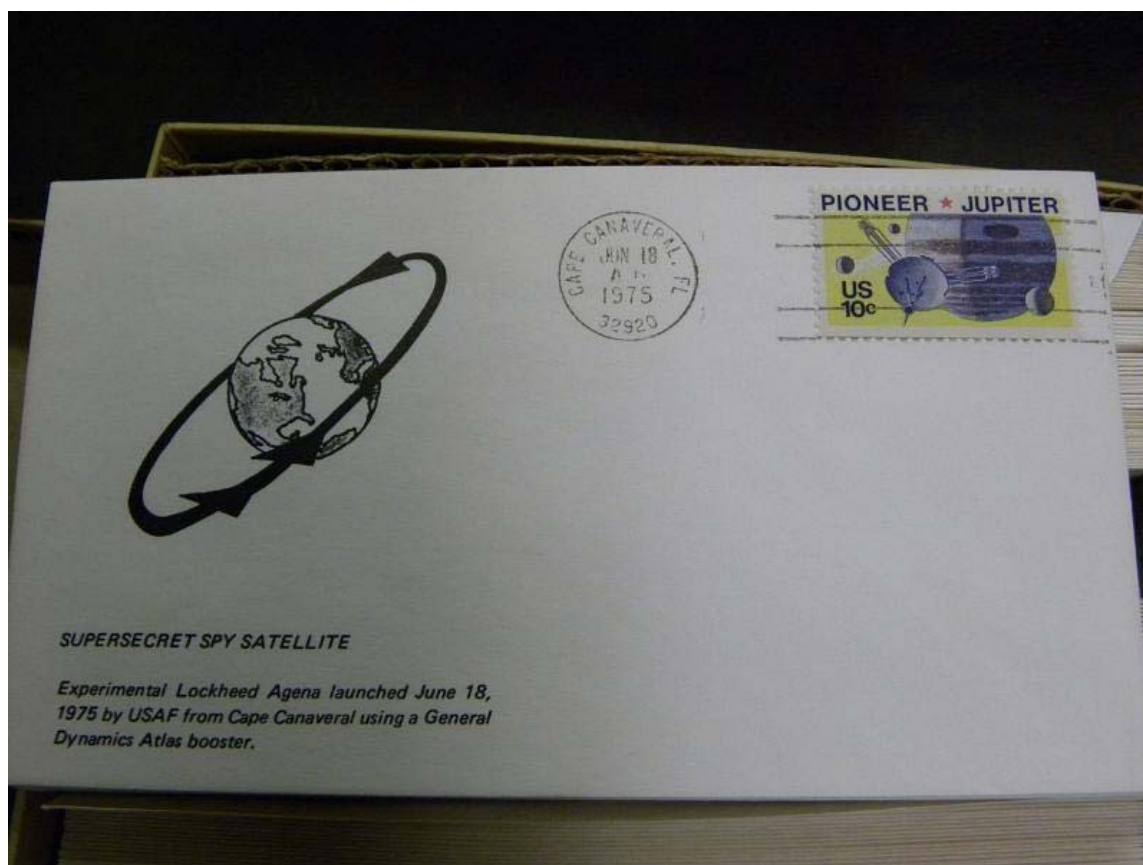


51-I DISCOVERY SPACEFLIGHT

Discovery, on America's 20th space shuttle mission, launched from the Kennedy Space Center, Florida on August 27, 1985 at 6:58 a.m. EDT. Landing was at Edwards Air Force Base, California on September 3 at 6:15 a.m. PDT. The crew of five was: Joe H. Engle, commander; Richard O. Covey, pilot; and mission specialists James D. A. Van Hoften, John M. Lounge, and William F. Fisher.



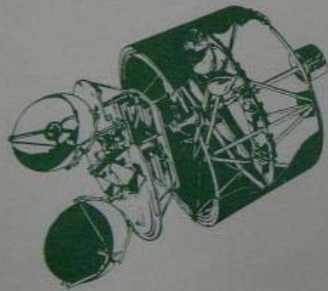






CANADIAN COMMUNICATIONS SATELLITE
Telesat-C - "Anik-3"

Space City Cover Society



DEFENSE SATELLITE COMMUNICATIONS
SYSTEM (DSCS II 5th and 6th)

*The twin Comsats failed to orbit and reentered the
atmosphere due to a malfunction. Launch was
made by a TITAN III-C, on May 20, 1975 (a.m.).*





**LIFE SCIENCES
SPACELAB MISSION DEVELOPMENT TEST III**

This 7-day simulation of a typical Spacelab mission was held at JSC in Houston. Participants were Astronaut-physician Dr. William E. Thornton, mission specialist; Dr. Carter Alexander, payload specialist; and Dr. Bill A. Williams, payload specialist. The simulation began on May 17, 1977 and ended on May 23, 1977.

Space City Cover Society

**AMES RESEARCH CENTER
Mountain View, Calif.**

A "rack" of 20 life sciences experiments was developed and built at Ames and shipped to Houston for the simulation. An additional 6 JSC experiments were run during the simulation. All was monitored by Ames during the simulation.

**HiMAT — RPRV 870
HIGHLY MANEUVERABLE
AIRCRAFT TECHNOLOGY**



HiMAT is a joint NASA/USAF program. The RPRV 870 is an unmanned remotely piloted research vehicle. All tests flown at Edwards, Calif., home of NASA's Dryden Flight Research Center.

FIRST CAPTIVE FLIGHT

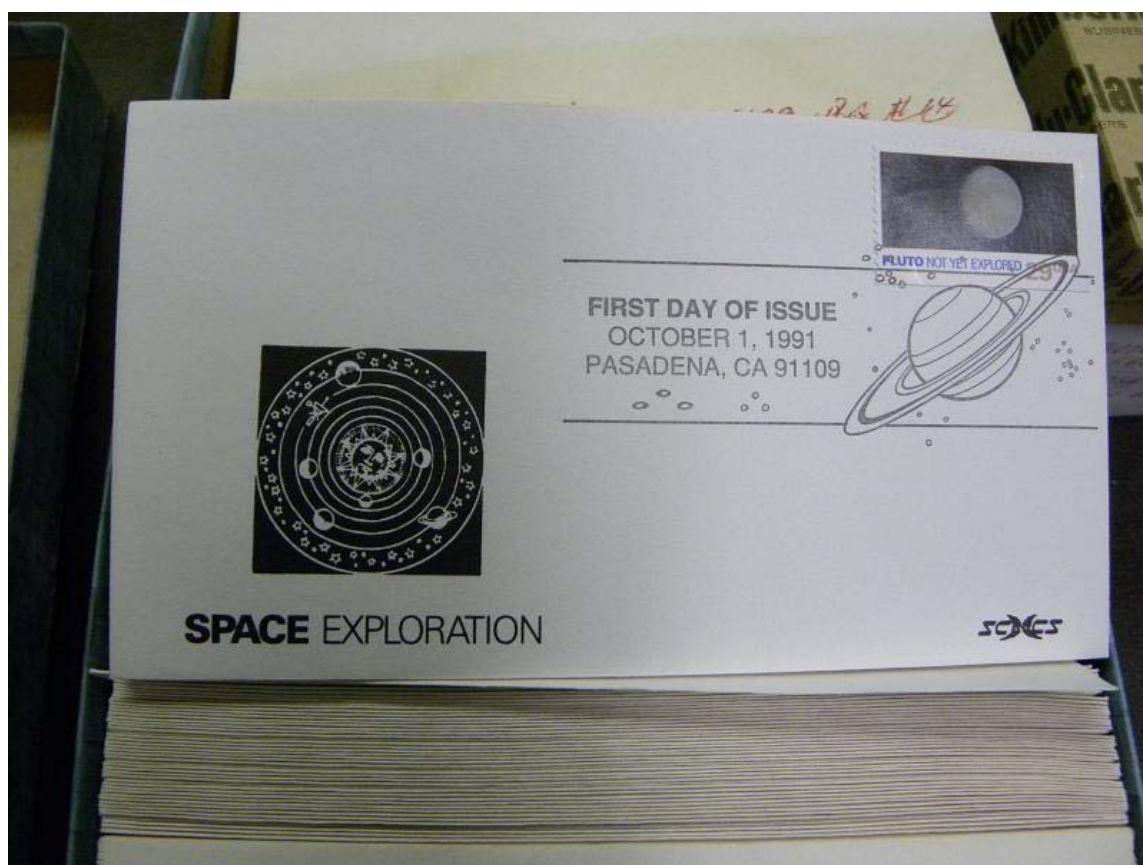
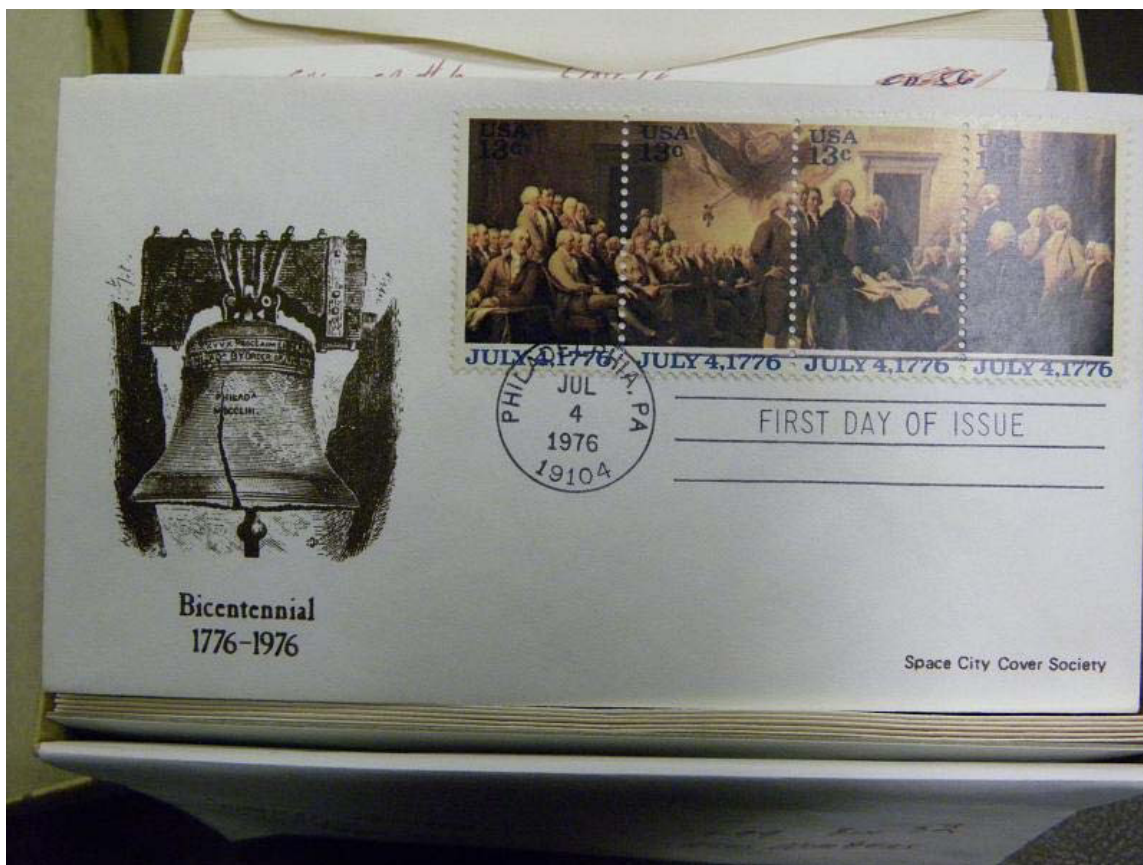
Date: July 11, 1979
Time: 1 hour, 15 minutes

SCMC



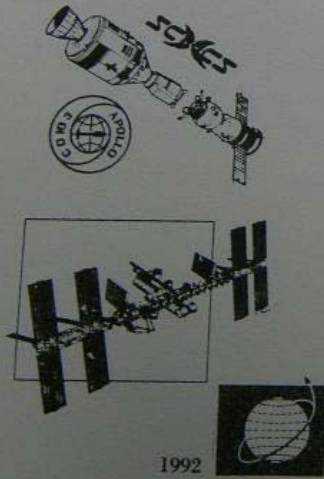






FD (US/RUSSIA) - 7

FD 28



INTERNATIONAL SPACE YEAR



SA-A-1-7

SE-10-10-10

CL-10-10-10

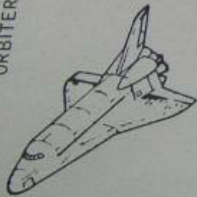
FD 68



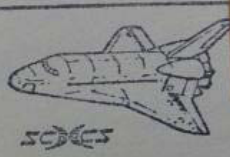
UNITED STATES POSTAL SERVICE
Bicentennial



SPACE SHUTTLE
ORBITER



MAILER'S
POSTMARK
PERMIT
1



SPACE SHUTTLE TRAINING AIRCRAFT (STA)
FOR SHUTTLE ORBITER TRAINING FLIGHTS

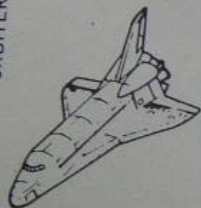
LOCAL TRAINING FLIGHT

Crew: Manson, Rainey, Bassham
Date: July 20, 1976

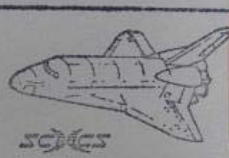
Specimen
Space City Cover Society

STA (947)-5

SPACE SHUTTLE
ORBITER



MAILER'S
POSTMARK
PERMIT
1



SPACE SHUTTLE TRAINING AIRCRAFT (STA)
FOR SHUTTLE ORBITER TRAINING FLIGHTS

FIRST OF TWO STA's (#946) ARRIVES AT
ELLINGTON AFB NASA TRAINING SITE
NEAR JOHNSON SPACE CENTER IN HOUSTON

Specimen
Space City Cover Society

Below are the printing plates he used

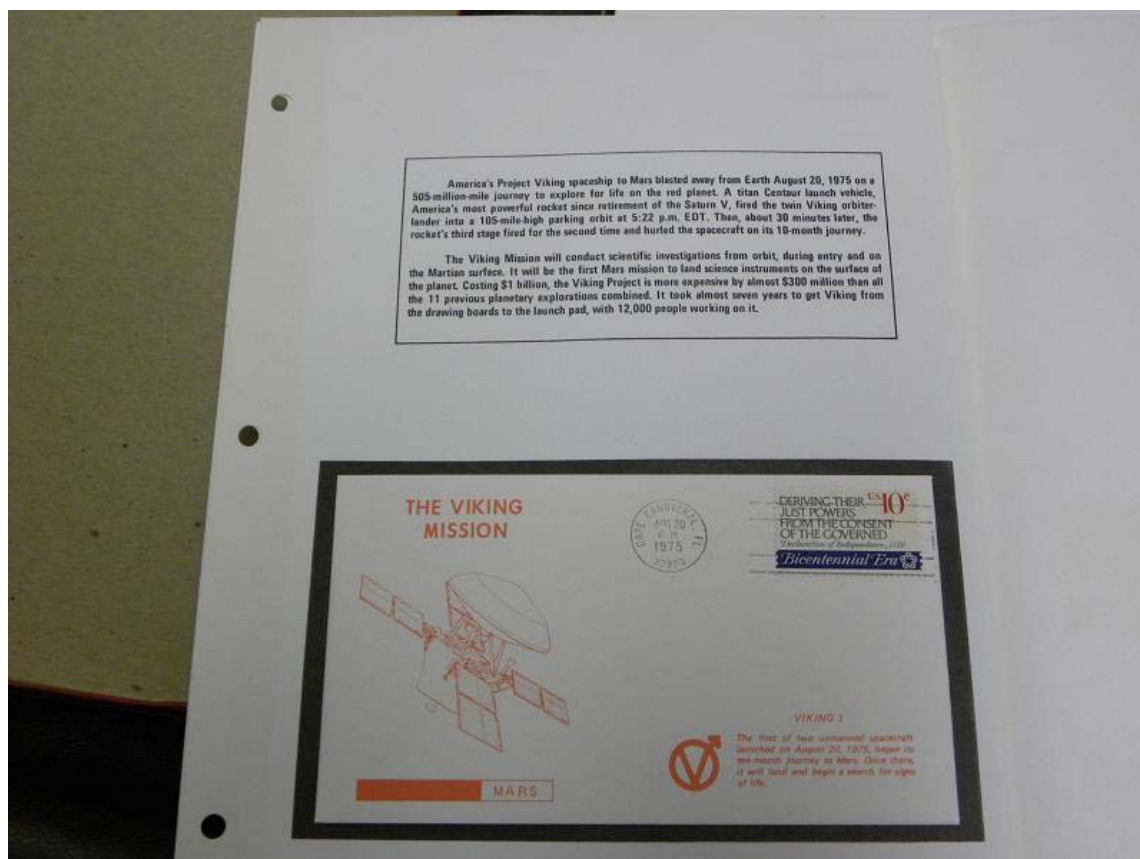
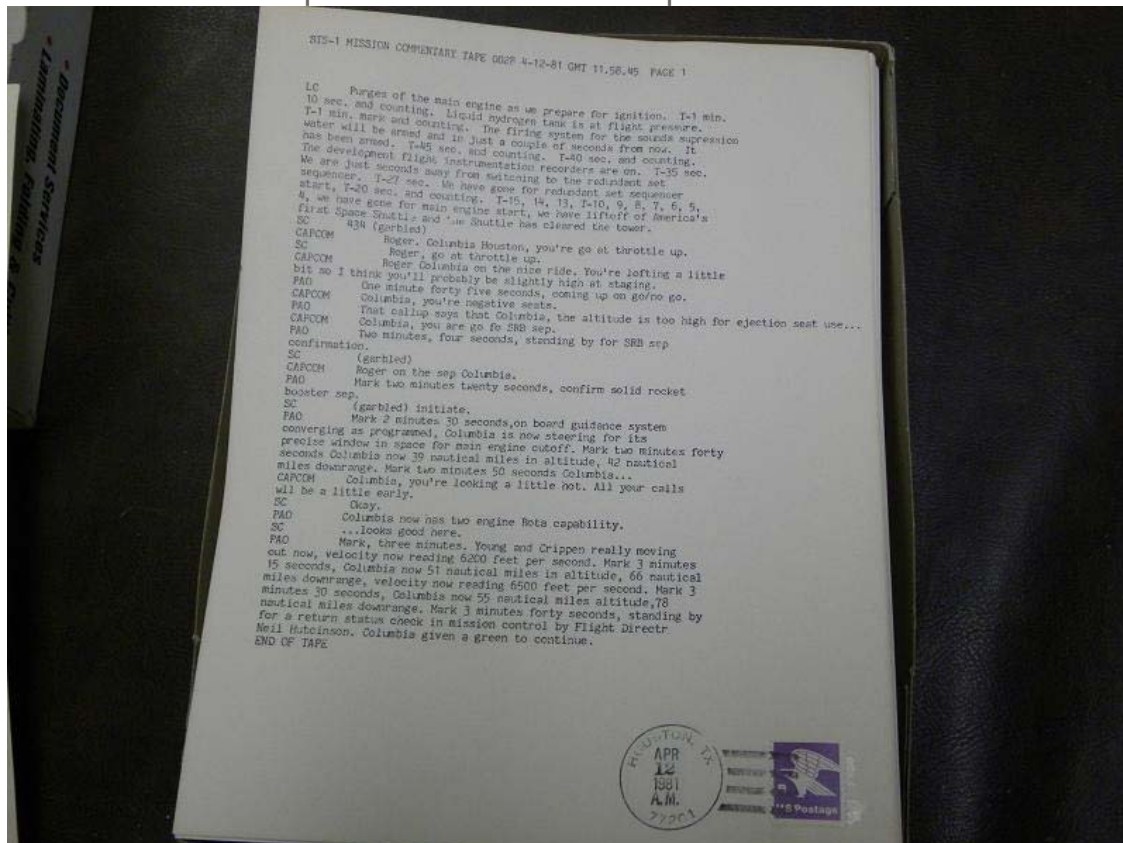


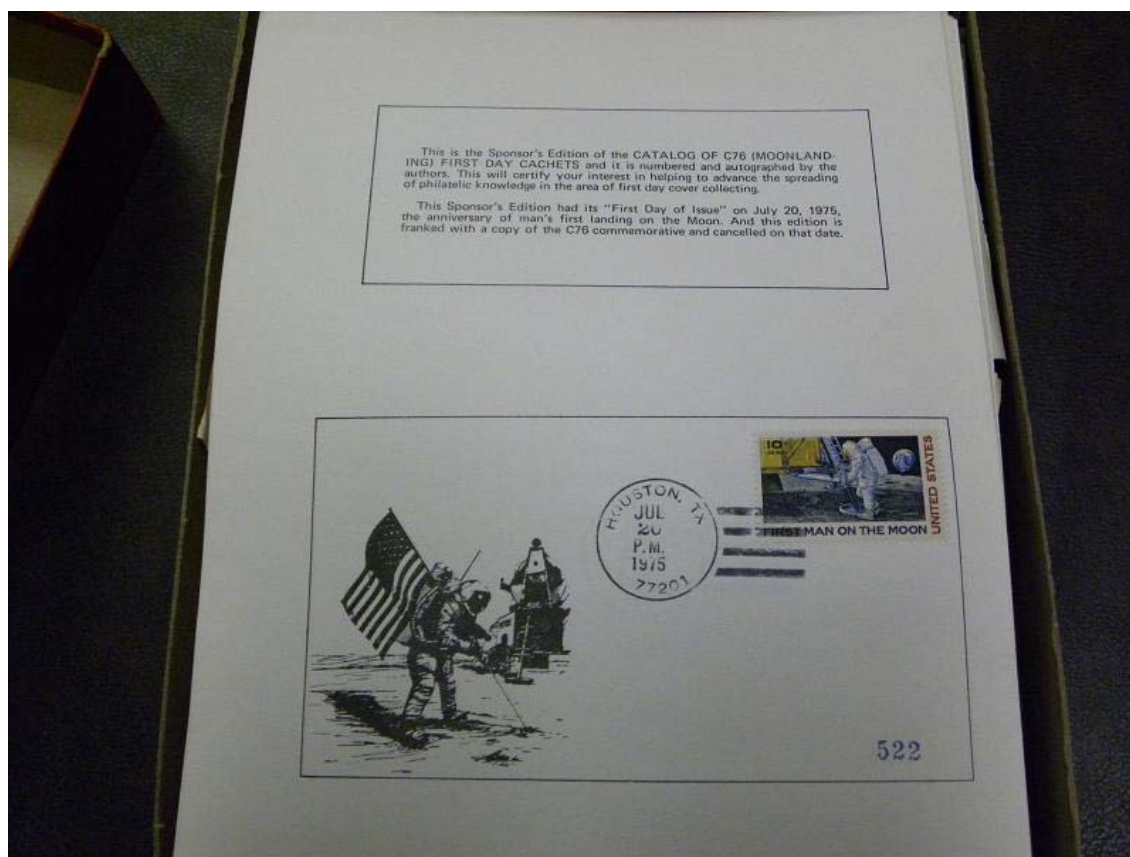




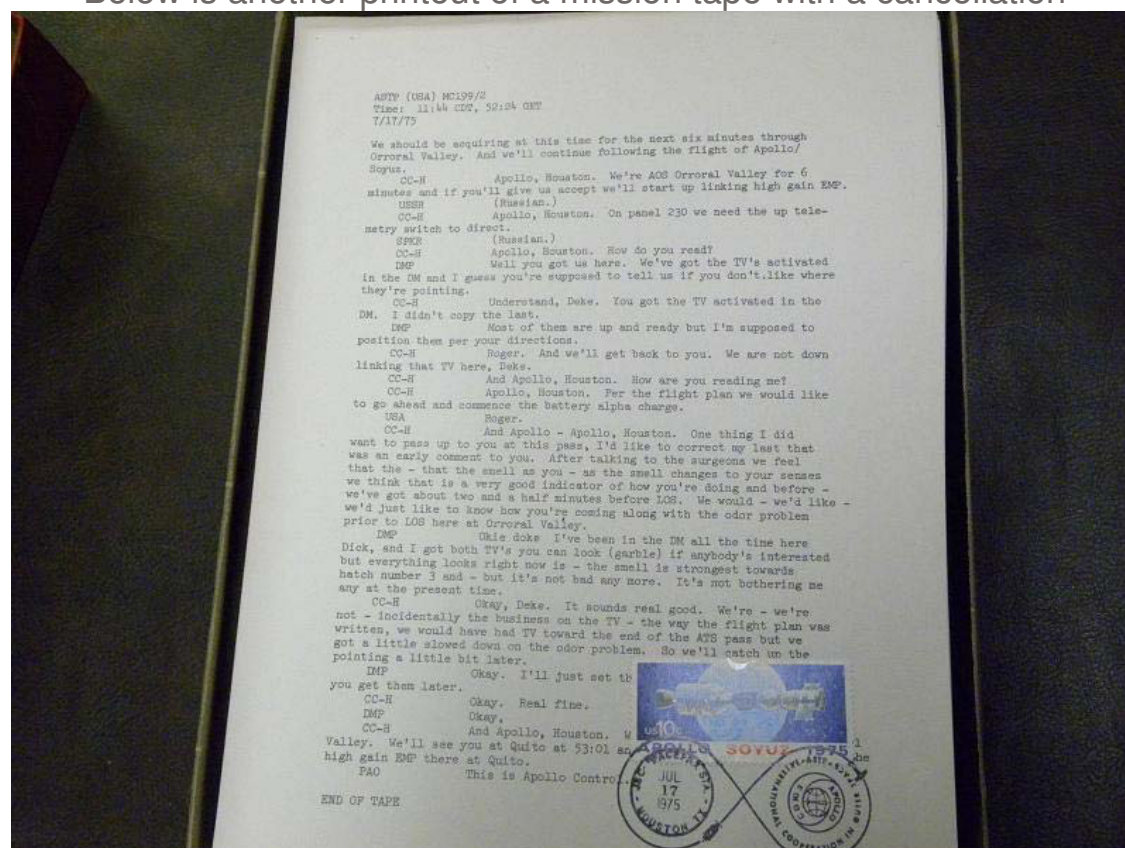


Below is a printout of a mission tape with a cancellation



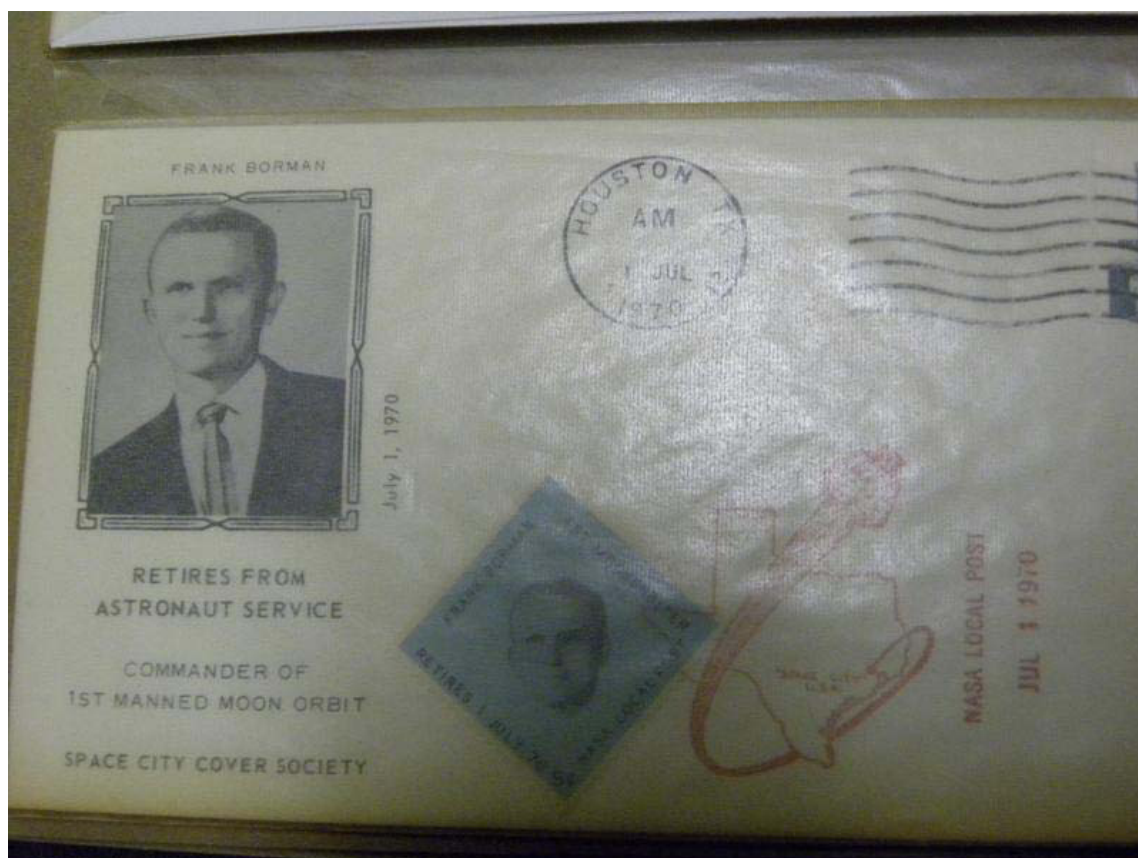


Below is another printout of a mission tape with a cancellation



Below are some covers that are in three ring binders stating which box the cover is in





5th
ANNIVERSARY



Apollo VIII

Frank Borman
James A. Lovell, Jr.
William Anders

Space City Cover Society

Borman, James A. Lovell, Jr., and William A. Anders.



5th
ANNIVERSARY



Apollo LM descended to within 9 miles of Moon and later rejoined CSM.

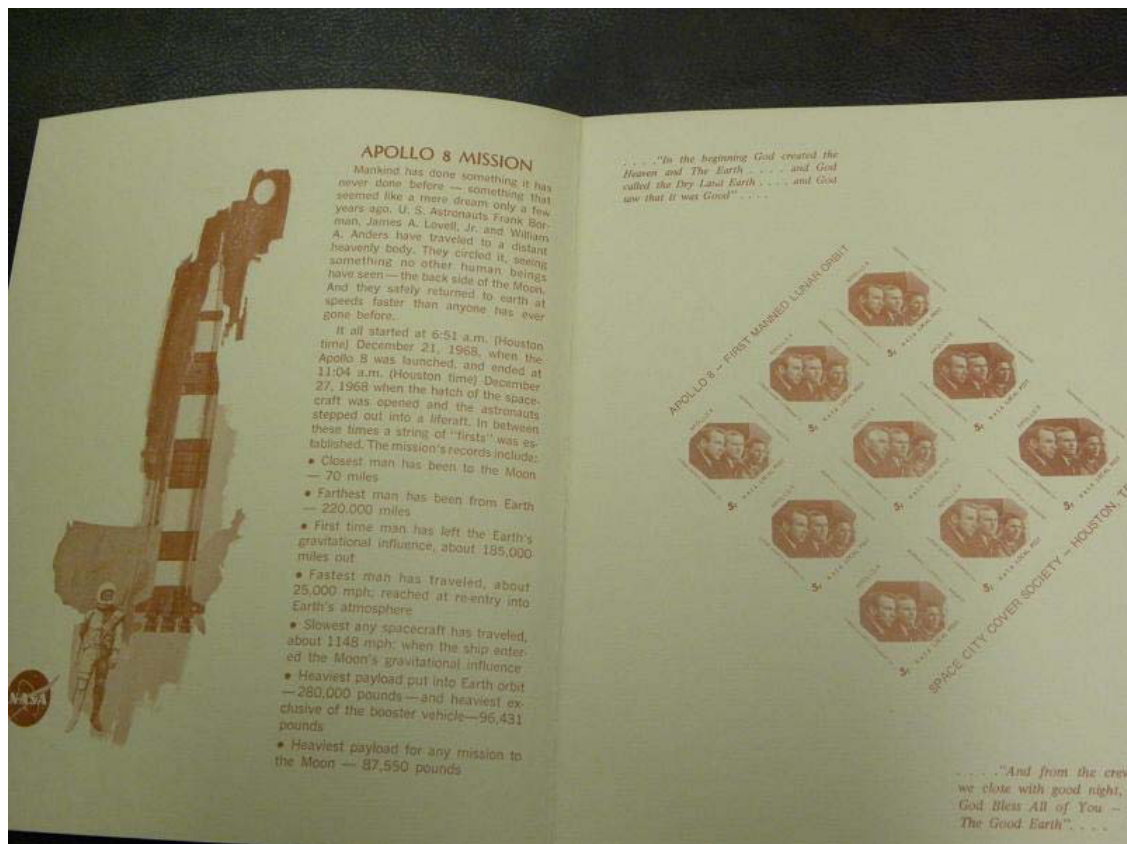
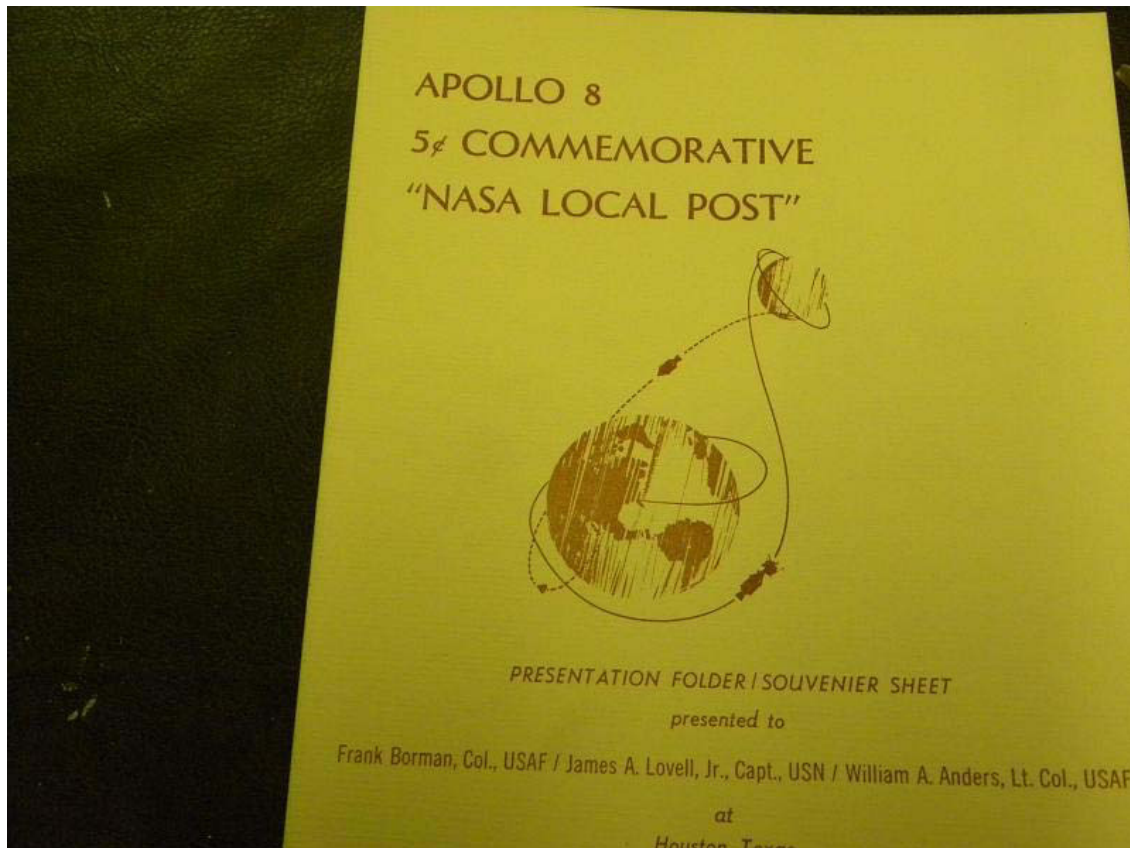
Apollo X

Thomas P. Stafford
John W. Young
Eugene A. Cernan

Space City Cover Society



Below is a Commemorative NASA Local Post sheet



U.S. IN SPACE A DECADE OF ACHIEVEMENT 1961-1971



Official First Day of Issue
Houston, Texas
Huntsville, Alabama
Kennedy Space Center, Florida



Honoring
Gemini Program



Effective November 26, 1979, the U.S. Postal Service allows private delivery of "extremely urgent" letters. Minimum fee of \$3.00 must be charged.

The Gemini Program determined man's performance during prolonged orbital flight. The Gemini spacecraft, with a crew of two, was the first in which the pilot controlled the craft. This set of stamps honors the Gemini astronauts not previously honored in Booklet #2.

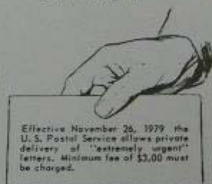


Booklet #3
Private Express Mail

PRIVATE EXPRESS MAIL

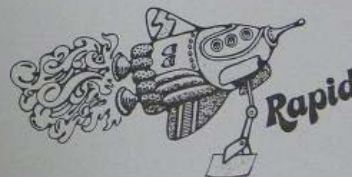


Honoring
Gemini Program



Effective November 26, 1979, the U.S. Postal Service allows private delivery of "extremely urgent" letters. Minimum fee of \$3.00 must be charged.

The Gemini Program determined man's performance during prolonged orbital flight. The Gemini spacecraft, with a crew of two, was the first in which the pilot controlled the craft. This set of stamps honors the Gemini astronauts not previously honored in Booklet #2.

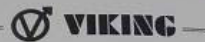


Booklet #3
Private Express Mail

PRIVATE EXPRESS MAIL



VIKING 2 MISSION



The second spaceship in America's Project Viking was launched at Cape Canaveral, Florida on September 8, 1975, at 2:39 p.m. EDT. Again, a Titan/Centaur III launch vehicle was used to put the craft into space for its year-long journey to Mars.

Viking 2 inserted into orbit around Mars on August 7, 1976, after a 40 minute firing of its main on-board rocket. This put the craft on a looping pathway, allowing it to survey wider regions of the planet. It had reached its destination after a 440-million mile trip from Earth.

The nerve-center of Viking Operations is the Viking Mission Control and Computing Center (VMCC) located at The Jet Propulsion Laboratory in Pasadena, California. A 750-person flight team of engineers, scientists and technicians maintain constant control of the Viking spacecraft throughout the planetary phase of the mission.



Viking 2 landed on the Utopia dunes of Mars on September 3, 1976 to press the search for life but communication problems with its orbiting mothercraft blacked out details and delayed receipt of its first pictures. The landing site was 1,500 miles farther north and halfway around the planet from the Chryse desert where Viking 1 landed. The landing was at 3:58 p.m. PDT.

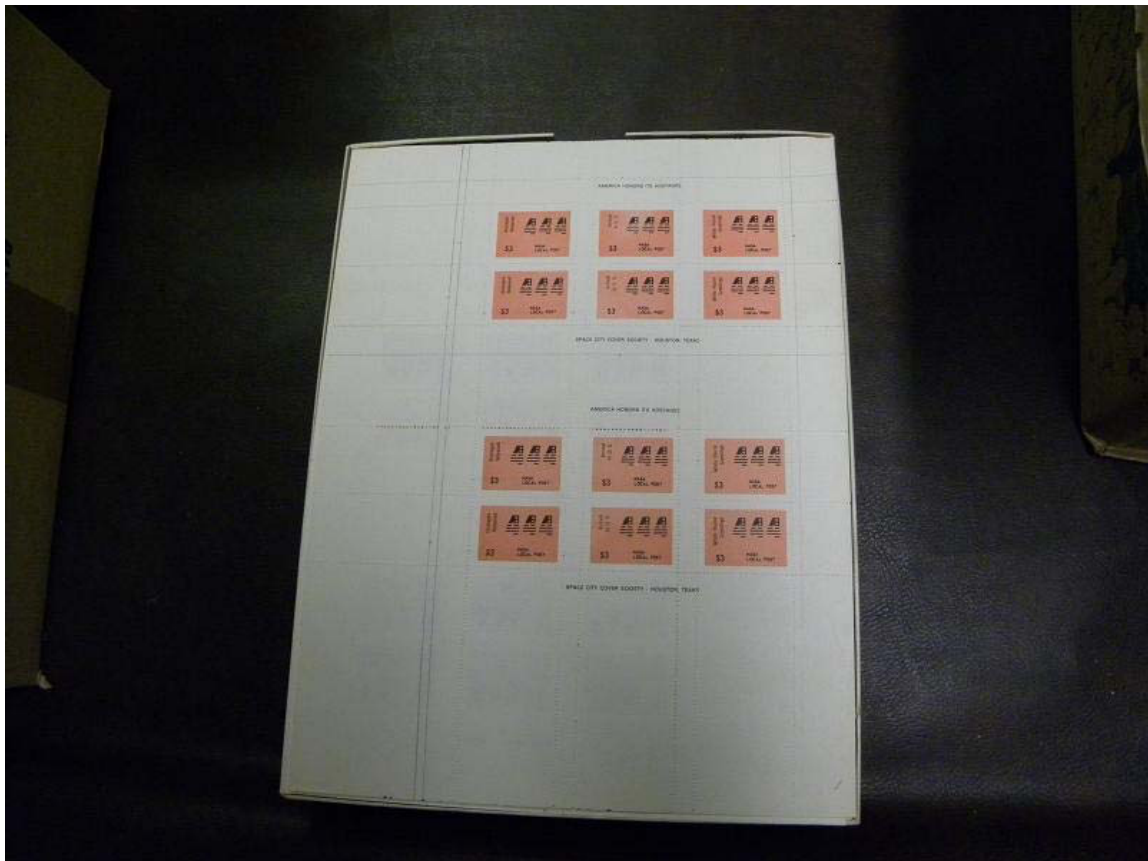
The lander, weighing more than half a ton, will carry out some 60 days of constant experiments. There will be a break in November when Mars and Earth are on opposite sides of the sun, eliminating communications for a month. When the landers are once again in touch with Earth, they will alternate conducting tests for as long as they hold up in the harsh Martian environment.

Below are some of the NASA Local Post sheets and the last one shows a full sheet before separating into two sheets.

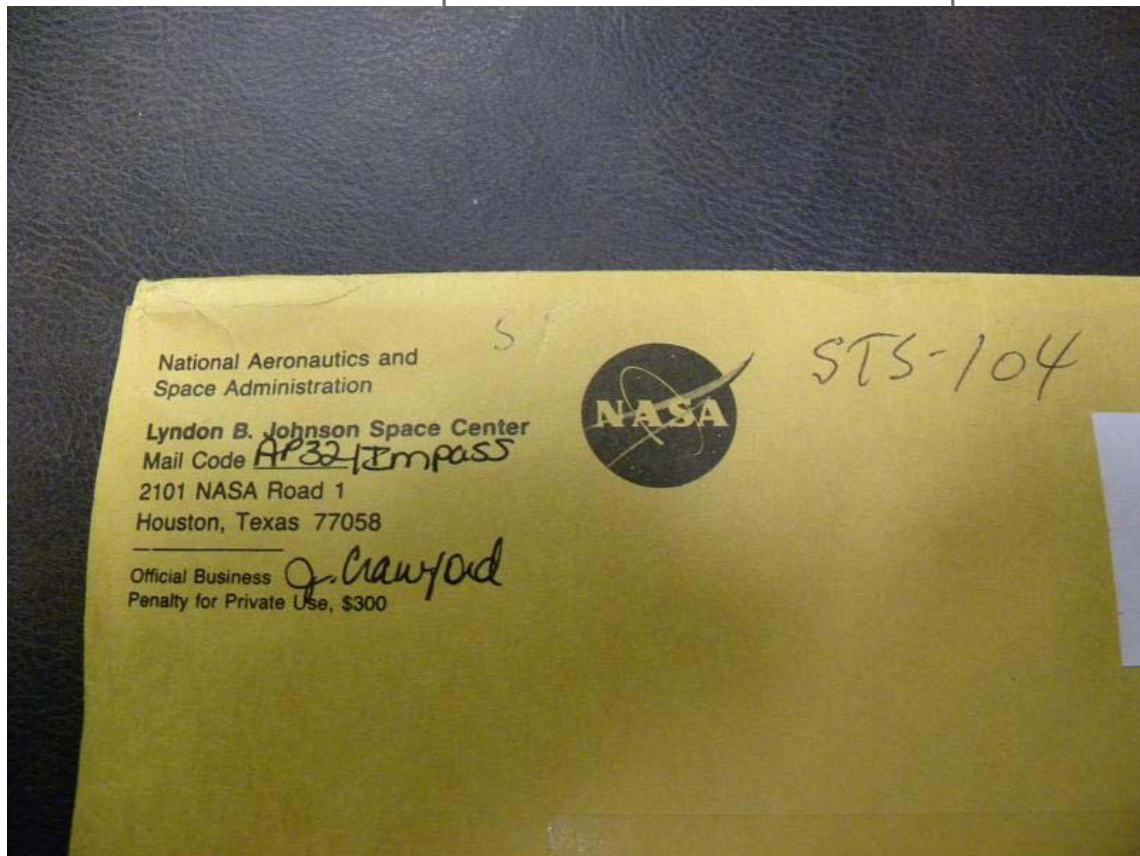






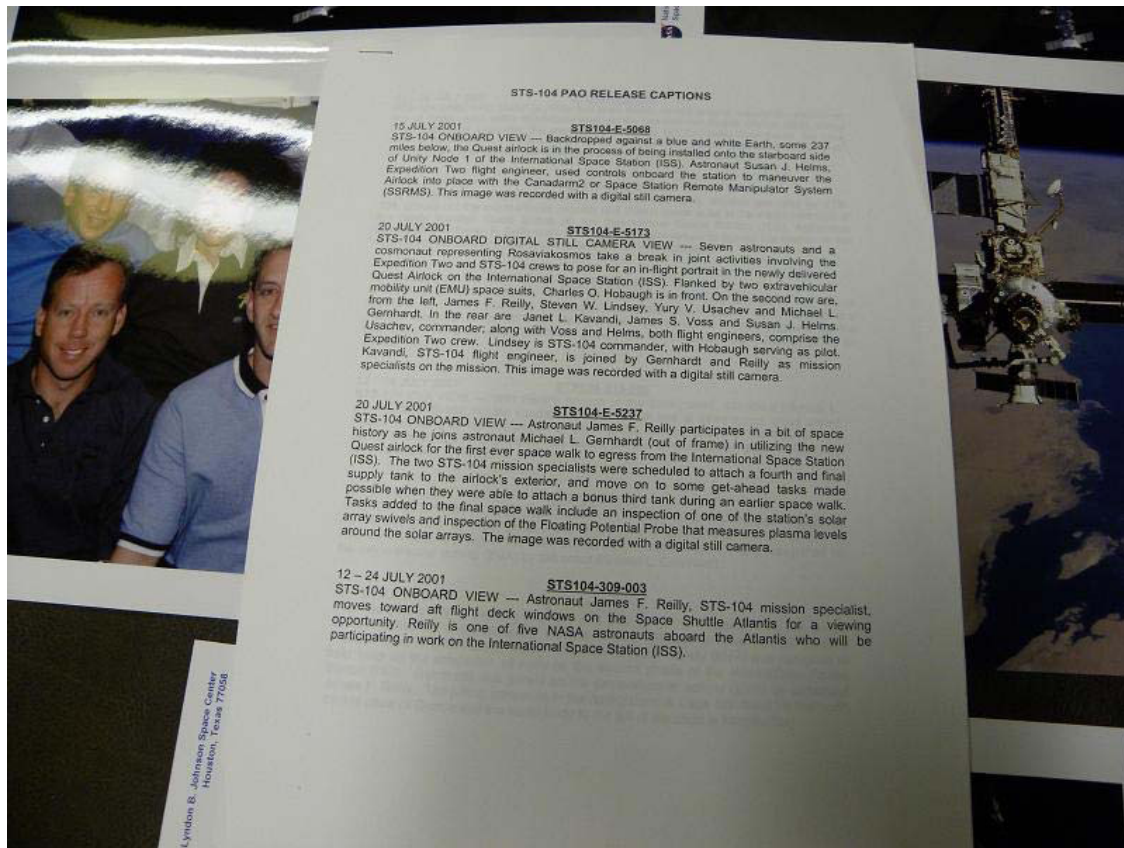


Below is one of the photo sets and each one is complete









Below, the middle boxes are all photo sets and there are more besides these





Gerards Stamps - Since 1926

Our Policies:

Terms of Sale: For all mint lots, unless the description specifically states that all stamps are MNH, then there are some stamps that are hinged. Assume that for most collections or large lots, the condition of the stamps are in all grades. Stamps or lots described with faults, or are in all conditions and grades, are not returnable. Unless there is a certificate with a stamp, all others cannot be warranted since we do not have a panel of experts to look at them. Most stamps though, are identifiable through catalogs, but since we do not expertise, it is possible for a stamp to be mismarked when we got it or when looked up in a catalog. We do our best, when marking stamps, to correctly mark it and the feedbacks reflect that. Because we sell a lot of large lots, we cannot check each and every stamp to see if it has the right number on it. If any other lot is returned, after approval through email, it will have a 30% handling fee. All sales are final. If you bid then you are agreeing to these terms. Good Luck!

Payment:

Paypal is accepted and preferred. Only can accept Paypal payments from "CONFIRMED" users and also can only ship to your Paypal "CONFIRMED" address. There can be no exceptions to this policy.

Shipping:

I cannot be responsible for lots lost or damaged in the mail. If you are concerned about this happening, please let me know what special USPS services you wish and I will include them in your invoice. Other countries will be at exact postage. We will combine shipping if you win more than one auction to save on shipping costs. Notify us before you pay or we cannot combine lots after you pay.