

MAKE CHECK & SEND ORDER To:

Harry Anderson  
P O Box 36192  
Houston TX 77236

P.O. Box 36192

HOUSTON, TEXAS 77236-0192

FACT SHEETS FOR: MISSIONS TO MARS BY THE USA  
PART 1 EARLY MISSIONS



MARS...Just the mention of this planet, made up of craters, valleys, and volcanoes, and those hearing it begin to let their imagination take over. U. S. spacecraft have been around it and on it. We haven't found a Martian yet but the dream lives on.

As a collector of space history, put these SCCS covers in your collection and be ready to hail the BIG NEWS. Some day explorers will prove life was there. And humans will find a way to get there and live!

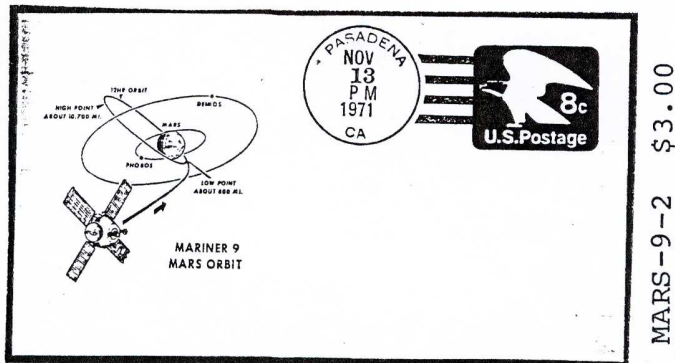
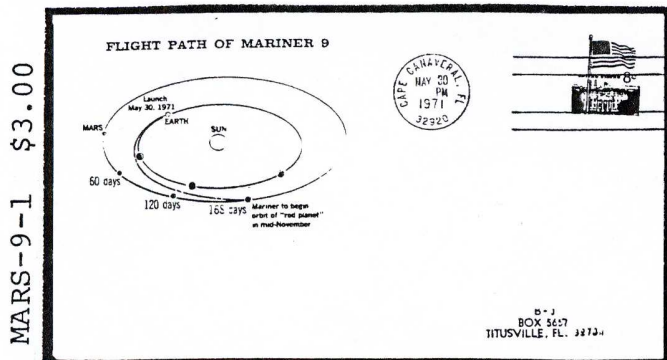
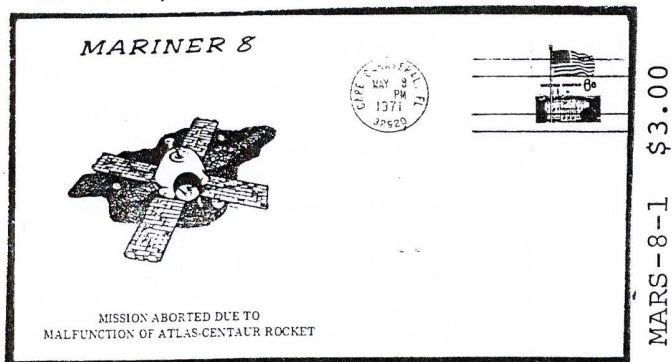
SCCS COVERS FOR EARLY MISSIONS TO MARS

MARINER 8

Launch was by an Atlas Centaur from Cape Canaveral, Florida on May 8, 1971. The mission was to survey Mars but the craft was destroyed on launch due to a malfunction in the Atlas Centaur rocket.

MARINER 9

Launch was aboard an Atlas Centaur on May 30, 1971 and the mission was to survey Mars. The first planetary encounter was when it was placed into orbit around Mars on November 13, 1971. All of the scientific experiments were successfully completed. A total of 6876 photos of the Martian surface were returned to Mission Control in Pasadena, California.





MAKE CHECK & SEND ORDER TO:

Harry Anderson  
P O Box 36192  
Houston TX 77236

P.O. Box 36192

HOUSTON, TEXAS 77236-0192

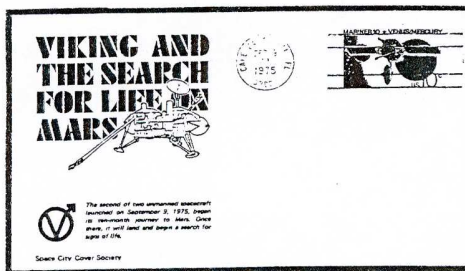
FACT SHEET FOR: THE TWO VIKING MISSIONS  
EXPLORATION OF MARS' SURFACE  
Part 2...VIKING 2

VIKING 2 MISSION

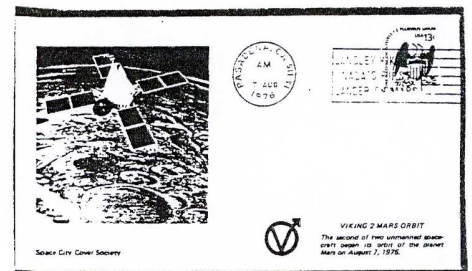
The two Viking spacecraft were identical but needed to carry out identical tasks from two different regions of Mars. Viking 1 had landed at its goal...Chryse, between the Margaritifer Terra to the south and the dark mass of Acidalia to the north.

Viking 2 had its site, Cydonia. This site was closer to Mars' north pole. When Viking 1 landed on Mars, there was a distance of 212,000,000 miles between Earth and Mars. Viking 2 would make its landing at a time when the distance was even greater.

Before the two landings, scientists at the Jet Propulsion Laboratory at Pasadena CA (Viking Mission Control) estimated at a total success of the two craft at 50-50. Viking 1 and 2 turned out to be two great pathfinders in the search of our planetary system by the United States.



VIKING 2-1 Launch  
C.C. cancel Sep 9, 1975



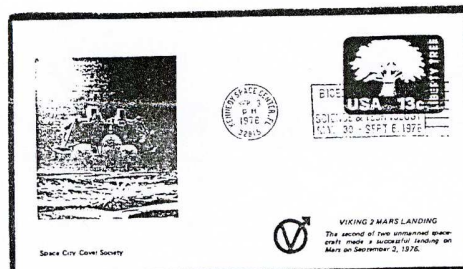
VIKING 2-2 Mars Orbit  
Pasadena cancel  
Aug 7, 1976

VIK-2-1 \$2.50

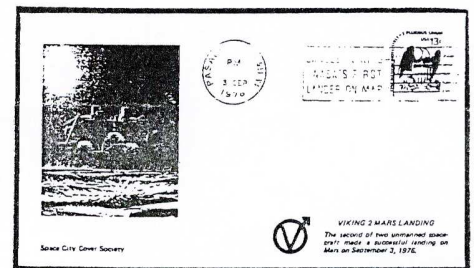
VIK-2-2 \$2.50

VIKING 2-3 Mars Landing  
KSC Sep 3, 1978

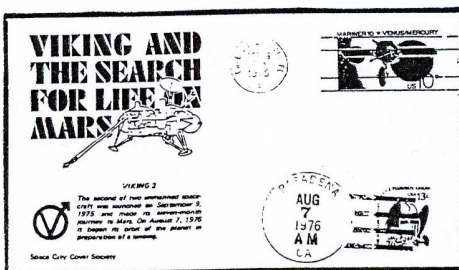
VIKING 2-4 Mars Landing  
Pasadena Sep 3, 1978



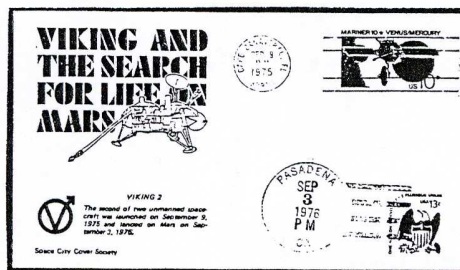
VIK-2-3 \$2.50



VIK-2-4 \$2.50



VIK-2-5 \$3.50



VIK-2-6 \$3.50

DOUBLE CANCELS MARS  
Canaveral & Pasadena

VIK-2-5 Launch & Orbit  
VIK-2-6 Launch & Landing